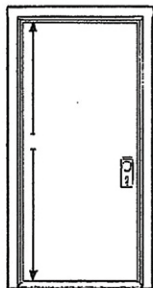
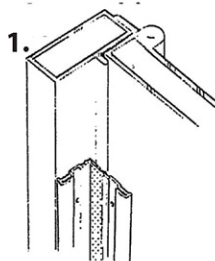


Installation Modification for YKK Type Doors

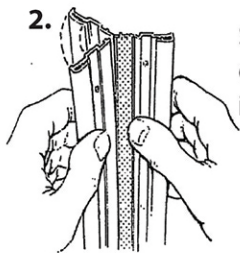


For smoothest operation and maximum wear, fixing strips must be straight and parallel to door and each other.

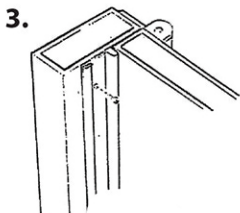
All components must be cut square with space top and bottom to prevent binding.



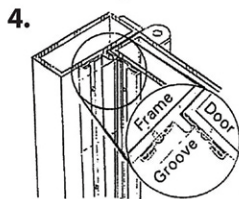
1. Metal door with fixing strip in position. Align with bottom of door.



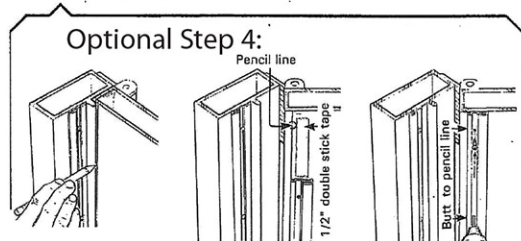
2. Separate frame side of fixing strip for installation.



3. Butt frame fixing strip to metal lip as shown. Screw in TEK screws.



4. Align the edge of the lip with groove between spacer and door fixing strip. Screw in TEK screws

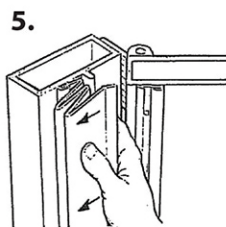


If the space between door and lip is too small to accept fixing strip, use Optional Step 4:

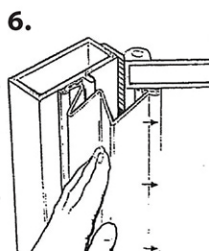
Using the lip as a straight edge, draw a pencil line from top to bottom. Separate the door fixing strip.

Align door fixing strip with the top and bottom of door and the pencil line as shown.

Secure fixing strip with TEK screws. Snap pleated panel in position. Follow Step 5-6



5. Place the 1" panel next to the gripper of the frame fixing strip. Align top and snap into place.



6. Snap the 3" panel into door fixing strip gripper. Listen for 3 clicks. Follow Step #6 on instructions.